



MultiSync Foldable Travel Keyboard User Manual

For iPhone and iPad

K166-1128



WARNING!

Do not damage the rechargeable battery. A damaged battery can cause an explosion or fire, and can result in personal injury and/or property damage. To prevent injury or damage:

- Do not use or charge the battery if it appears to be damaged. Signs of damage include, but are not limited to, discoloration, warping, and leaking of battery fluid.
- Do not expose the battery to fire, high temperature, or direct sunlight.
- Do not immerse the battery in water.
- Do not use or store the battery inside a vehicle during hot weather.
- Do not drop or puncture the battery.
- Do not open the battery or short-circuit its contacts.

Use the battery only for its intended use and according to the instructions in the product documentation. Avoid contact with the rechargeable battery if it appears to be leaking. Battery fluid is corrosive, and contact with it can result in personal injury and/or property damage.

To prevent injury or damage:

- If the battery leaks, avoid contact with the battery fluid.
- If battery fluid gets into your eyes, immediately rinse your eyes with clean water and seek medical attention. Do not rub your eyes.
- If battery fluid gets onto your skin or clothing, immediately use clean water to wash off the battery fluid.

Charge and use the rechargeable battery only in strict accordance with the instructions.

- Charge or using the battery in unauthorized equipment can cause an explosion or fire, and can result in personal injury and/or equipment damage. To prevent injury or damage:
 - o Do not charge or use the battery if it appears to be damaged or leaking.
 - o Discontinue charging a battery that gives off extreme heat or a burning odor.
 - o Use the battery only on specified compatible equipment.

Bluetooth is a registered trademark owned by Bluetooth SIG, Inc. Windows XP and Vista are registered trademarks of Microsoft, registered in the U.S. and other countries. Mac, iPhone, iPad, iPod, and Apple TV are trademarks of Apple Inc., registered in the U.S. and other countries. iOS is a trademark or registered trademark of Cisco in the U.S. and other countries and is used under license. Kanex and the Kanex Logo are registered trademarks of Kanex, registered in the U.S. and other countries. Designed in Brea, California by Kanex.

Customer Service:

Online: <http://www.kanex.com/contact/techsupport>

Email: service@kanex.com

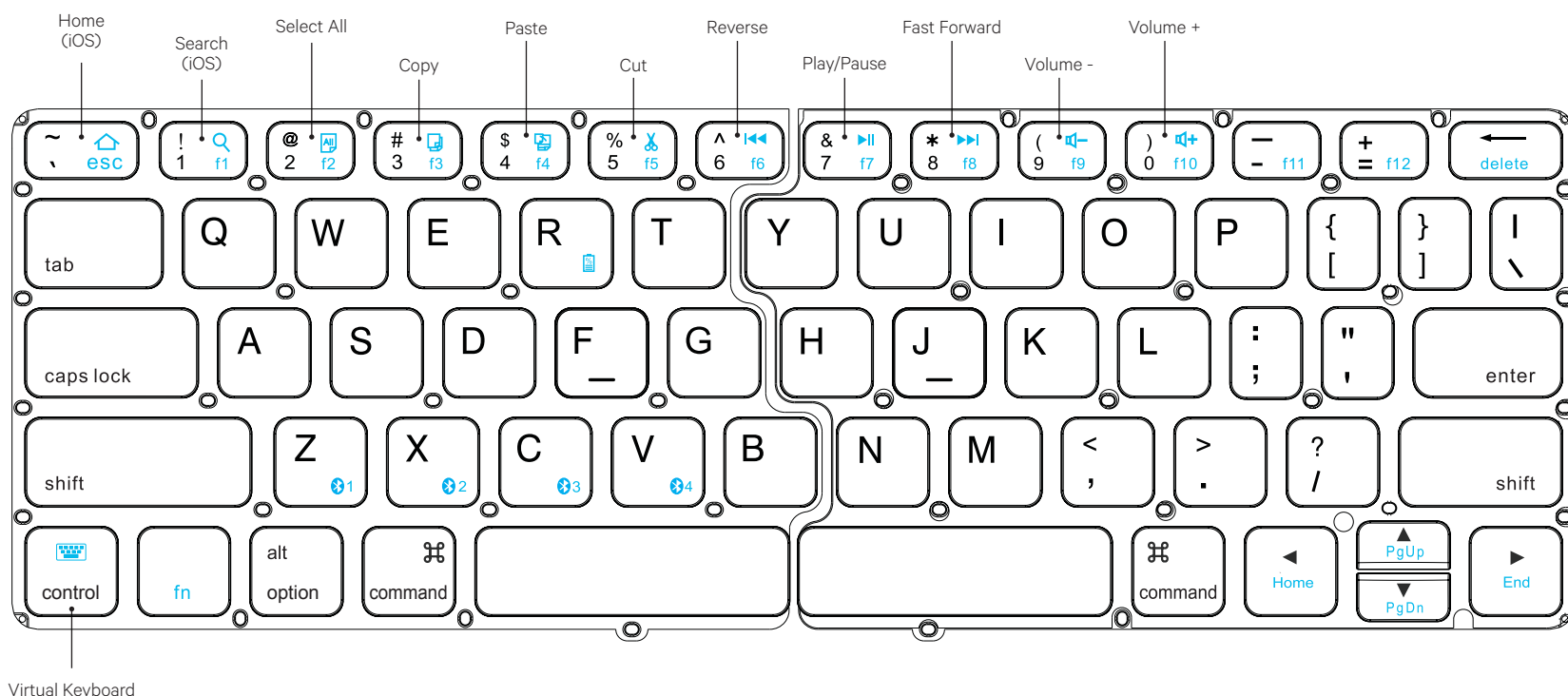
Phone: 844-228-7834

Kanex One Year Limited Warranty:

Kanex offers a one (1) year limited warranty from the original date of purchase and will offer a new replacement of a product due to a manufacturer's defect.

For more info please visit:

<http://www.kanex.com/support/warranty>



Virtual Keyboard

What's Inside:

- 1 x MultiSync Foldable Travel Keyboard
- 1 x Charging Cable
- 1 x User Manual

System Requirements:

- Bluetooth® Enabled Computer or Mobile Device
- Mac® OS X v10.6 or later
- iOS 7 or later
- Android 4.0 & Above
- Also Compatible with Windows® XP/Vista/7/8/8.1 (32-bit & 64-bit)

Pairing Your Keyboard:

1. Please use the included USB cable to fully charge the keyboard battery before your first use.
2. Open the Kanex Foldable Travel Keyboard to turn on.
3. Press the "fn" & desired Bluetooth key to assign your devices to that specific key. (fn+1, fn+2, fn+3, fn+4)
4. Complete the Bluetooth Pairing on your desired device.



Assign a Different Bluetooth Key to Another Device:

1. Make sure the Keyboard is powered on.
2. Follow steps 2-4 to pair additional Apple devices.

Note: You are able to pair up to Four Bluetooth enabled devices

Switching Between Devices:

The Keyboard can pair up to 4 different Bluetooth devices. You will be able to switch between your paired devices by pressing (fn+1, fn+2, fn+3, fn+4). The Bluetooth LED will quickly flash on & off once, indicating the switch between devices.

Note: The time between switching devices will take approximately 2-5 seconds.

Contenido:

- 1 Teclado MultiSync Foldable Travel Keyboard
- 1 Cable de carga
- 1 Manual del usuario

Requisitos del sistema:

- Computadora o dispositivo móvil con capacidad para Bluetooth®
- Mac® OS X v10.6 o posterior
- iOS 7 o posterior
- Android 4.0 o posterior
- Compatible también con Windows® XP/Vista/7/8/8.1 (32 y 64 bits)

Emparejamiento del Teclado Bluetooth compacto Kanex con funda soporte:

1. Use el cable USB que se incluye para cargar completamente la batería del teclado antes de usar por primera vez.
2. Abra el miniteclado plegable Kanex para encender.
3. Pula la tecla "fn" y la tecla Bluetooth deseada para asignar tus dispositivos a esa tecla específica. (fn+1, fn+2, fn+3, fn+4).
4. Complete el emparejamiento Bluetooth en el dispositivo deseado.



Asignar otra tecla de Bluetooth a otro dispositivo:

1. Asegúrese de que el teclado esté encendido.
2. Siga los pasos 2-4 para emparejar dispositivos de Apple adicionales.

Nota: Usted puede enlazar hasta cuatro dispositivos compatibles con Bluetooth.

Cambio entre dispositivos:

El teclado Keyboard puede emparejarse con hasta cuatro dispositivos Bluetooth distintos. Podrá cambiar entre dispositivos emparejados pulsando (fn+1, fn+2, fn+3, fn+4). El LED Bluetooth se encenderá y se apagará una vez, lo cual indica el cambio entre dispositivos.

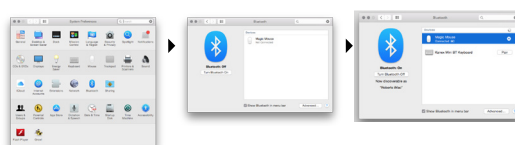
English

Master Reset:

1. Delete the keyboard from your devices before attempting to reset.
2. Press and hold the "fn" key and both "Shift" keys for 5 seconds back to master reset.
3. Follow the pairing steps to pair your new devices.

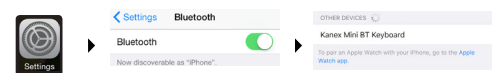
Mac® OS X:

- Go to System Preferences >> Select Bluetooth.
- Ensure Bluetooth is turned ON
- Select the "Pair" button next to "Kanex BT Keyboard (1128)"
- Follow the on-screen instructions for Keyboard Setup.
- Your Mac is now connected.



Apple iOS (iPad®, iPhone®, or iPod®)

- Launch the Settings application.
- Select Bluetooth and Turn on Bluetooth.
- Choose "Kanex BT Keyboard (1128)."
- Your iOS device is now connected.



LED Indicator:

1. Power Indicator:
 - The red light will stay on while charging the keyboard.
 - The red light will blink when the power level is too low.

- The green light will stay on green once fully charged.
2. The green light will turn on for 5sec when the keyboard is turned on
3. Connect indicator:
 - The blue light will blink while pairing the devices.
4. Caps indicator:
 - The green light will turn on when using the Caps Lock.

How to check the battery level?

- Hold the "FN" and "R" keys for 5 seconds.
- Green light flashes 4 times: 100% Battery
 - Green light flashes 3 times: 75% Battery
 - Green light flashes 2 times: 50% Battery
 - Green light flashes 1 time: 25% Battery
 - Red light flashes: Time to charge the keyboard.



Ergonomics:

Take care when using your electronic devices for long periods of time. Avoid long harmful actions such as repetitive motions, awkward positions and prolonged use in order to prevent physical damage. Take frequent breaks and use proper positioning when laying out your workspace.

Español

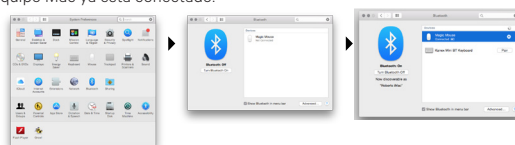
Nota: El tiempo entre el cambio de dispositivos tardará aproximadamente de 2 a 5 segundos.

Reinicio de fábrica:

1. Elimina el teclado de la lista de dispositivos Bluetooth antes de intentar restablecerlo.
2. Mantén pulsada la tecla "fn" y ambas teclas "Shift" durante 5 segundos para restablecer el teclado.
3. Sigue los pasos de emparejamiento para emparejar los dispositivos nuevos.

Mac® OS X:

- Vaya a System Preferences -> Seleccione Bluetooth.
- Verifique que el Bluetooth esté activado.
- Seleccione el botón "Pair" (Emparejar) junto a "Kanex BT Keyboard (1128)".
- Siga las instrucciones en pantalla para configurar el teclado.
- Su equipo Mac ya está conectado.



Apple iOS (iPad®, iPhone®, or iPod®)

- Inicie la aplicación de Configuración.
- Seleccione Bluetooth y active el Bluetooth.
- Elija "Kanex BT Keyboard (1128)."
- Su dispositivo iOS ya está conectado.



Indicador LED:

1. Indicador de energía:
 - La luz roja permanece encendida mientras se carga el teclado.
 - La luz roja parpadea cuando el nivel de potencia es demasiado bajo.
 - La luz verde permanece verde cuando está completamente cargado.
2. La luz verde se enciende durante 5 segundos cuando el teclado está activado.
3. Conectar el indicador:
 - La luz azul parpadea durante el emparejamiento de los dispositivos.
4. Indicador de mayúsculas:
 - La luz verde se enciende cuando se utiliza el bloqueo de mayúsculas.

¿Cómo comprobar el nivel de batería?

- Presiona las teclas "FN" y "R" durante 5 segundos.
- La luz verde parpadea 4 veces: batería al 100 %
 - La luz verde parpadea 3 veces: batería al 75 %
 - La luz verde parpadea 2 veces: batería al 50 %
 - La luz verde parpadea 1 vez: batería al 25 %
 - La luz roja parpadea: hora de cargar el teclado



Ergonomía:

Tenga cuidado cuando use sus aparatos electrónicos durante largos periodos. Para prevenir lesiones, evite acciones dañinas, tales como movimientos repetitivos, posiciones extrañas y uso prolongado. Tómese recesos frecuentes y coloque sus cosas en posición correcta cuando acomode su espacio de trabajo.

